

# Mosolut Event

Mosolut Event plastic tiles are ideal for both indoor and outdoor installation. They can be combined into large units and laid on a slightly uneven but firm terrain (concrete, paving, grass, flat stone surface, etc.). Therefore, they are most often found as flooring in trade fairs, festivals, party tents or in garages.

Water is easily removable from the surface, which is UV stable, easy to maintain, excels in resistance to temperature fluctuations without deformation, and is resistant to most chemicals. The tiles are connected to each other simply by inserting them into the locks on the edges of the tiles.





# Mosolut Event

## BASIC TECHNICAL PARAMETERS

27 mm	500 x 500 mm	Bfl-s2	R9	1,45 kg / pc	1m <sup>2</sup> = 4 pcs	Load class 42, 43
-------	--------------	--------	----	--------------	-------------------------	-------------------

## COLORS

Black

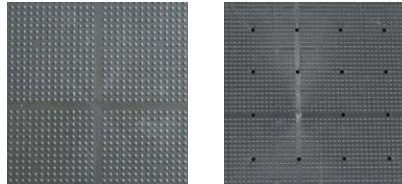


## LOCKING TYPE

hidden

## DESIGN

Smooth with protrusions



## ACCESSORIES



Ramps and corners

## USE

- Suitable cover for large-scale outdoor events - concerts, fairs, exhibitions, marketplaces, one-off humanitarian events

## BENEFITS

- Strong anti-slip panels
- Chemical stability
- Low flammability
- Easy maintenance
- Quick assembly and disassembly
- Universal use





**Mosolut s.r.o.**

Fučkova 920/21, 628 00 Brno

Czech republic

info@mosolut.cz

+420 602 789 113

+420 737 716 909

[www.mosolut.com](http://www.mosolut.com)

[www.hestra-plattan.com](http://www.hestra-plattan.com)

