

Stender 2

Exterior wall
created on 17.4.2023

Thermal protection

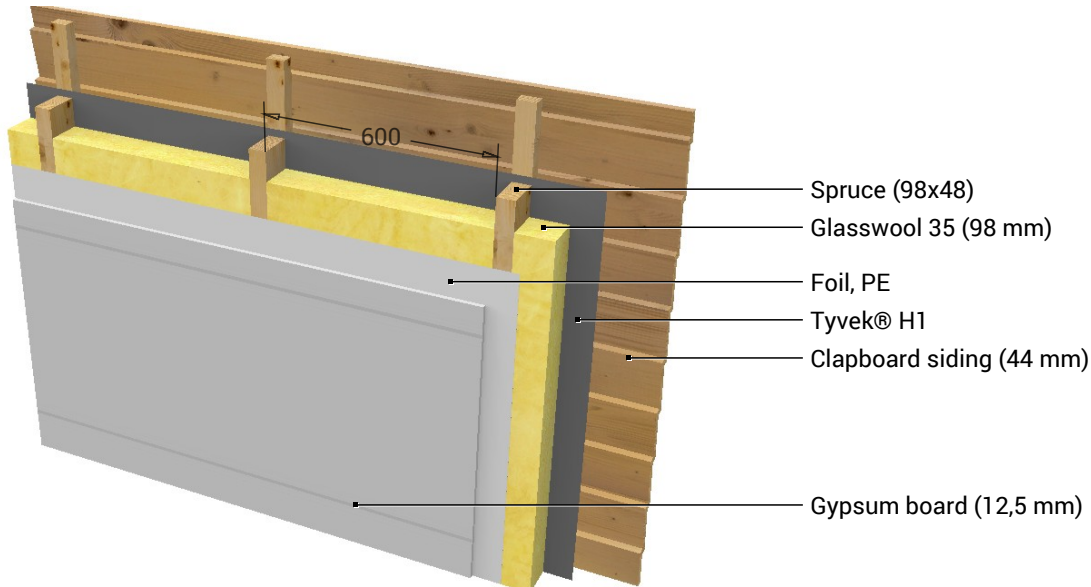
$U = 0,37 \text{ W}/(\text{m}^2\text{K})$

GEG 2020 Bestand*: $U < 0,24 \text{ W}/(\text{m}^2\text{K})$



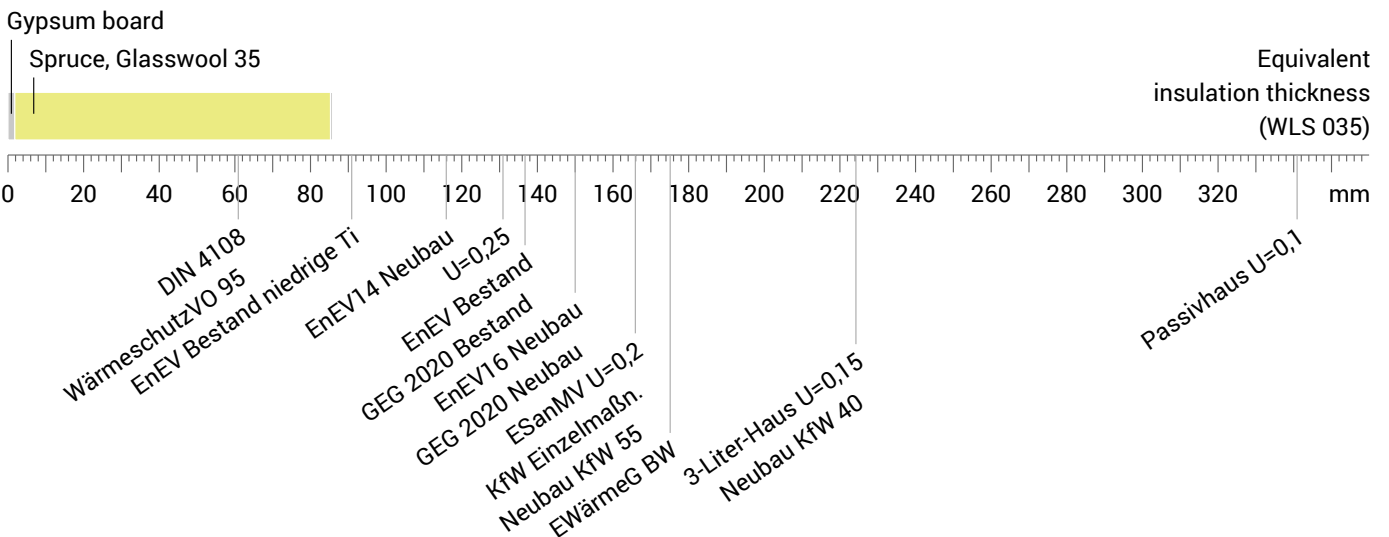
Heat protection

Temperature amplitude damping: 2,1
phase shift: 4,3 h
Thermal capacity inside: 10,8 kJ/m²K



Impact of each layer and comparison to reference values

For the following figure, the thermal resistances of the individual layers were converted in millimeters insulation. The scale refers to an insulation of thermal conductivity 0,035 W/mK.



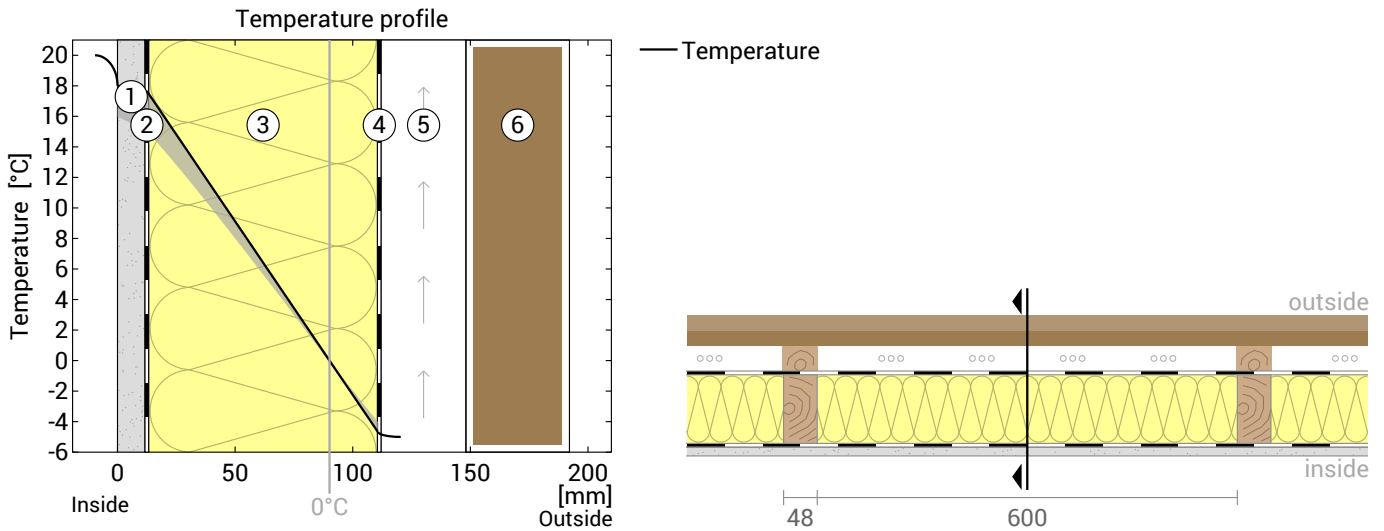
Inside air : 20,0°C / 50%
Outside air: -5,0°C / 80%
Surface temperature.: 16,0°C / -4,6°C

Thickness: 19,1 cm
Weight: 22 kg/m²
Heat capacity: 15.3 kJ/m²K

GEG 2020 Bestand BEG Einzelmaßn. GEG 2020 Neubau DIN 4108

Stender 2, $U=0,37 \text{ W}/(\text{m}^2\text{K})$

Temperature profile



- | | | |
|--------------------------|------------------------|---------------------------------|
| ① Gypsum board (12,5 mm) | ③ Glasswool 35 (98 mm) | ⑤ Rear ventilated level (36 mm) |
| ② Foil, PE | ④ Tyvek® H1 | ⑥ Clapboard siding (44 mm) |

Left: Temperature profile at the location marked in the right figure.

Right: Scale drawing of the component.

Layers (from inside to outside)

#	Material	λ [W/mK]	R [m ² K/W]	Temperatur [°C]		Weight [kg/m ²]
				min	max	
	Thermal contact resistance*		0,130	16,0	20,0	
1	1,25 cm Gypsum board	0,250	0,050	15,0	18,0	8,5
2	0,02 cm Foil, PE	0,400	0,001	15,0	17,6	0,2
3	9,8 cm Glasswool 35	0,035	2,800	-4,7	17,6	1,8
	9,8 cm Spruce (7,4%)	0,130	0,754	-4,1	15,6	3,3
4	0,015 cm Tyvek® H1	0,230	0,001	-4,7	-4,0	0,1
	Thermal contact resistance*		0,130	-5,0	-4,0	
5	3,6 cm Rear ventilated level (outside air)			-5,0	-5,0	0,0
6	4,4 cm Clapboard siding			-5,0	-5,0	7,7
	19,085 cm Whole component		2,697			21,5

*Thermal contact resistances according to DIN 6946 for the U-value calculation. $R_{si}=0,25$ and $R_{se}=0,04$ according to DIN 4108-3 were used for moisture proofing and temperature profile.

Surface temperature inside (min / average / max):	16,0°C	17,7°C	18,0°C
Surface temperature outside (min / average / max):	-4,7°C	-4,6°C	-4,0°C

