

ART 17TH

WITH PANTOGRAPH



THE MOST INNOVATIVE
AND TECHNICALLY ADVANCED
MEWP AVAILABLE TODAY

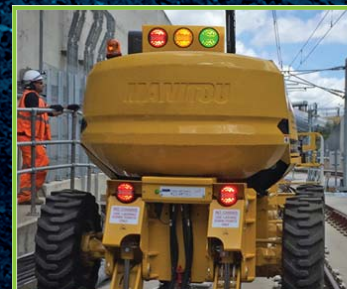
● MAXIMUM WORKING HEIGHT
16.25M WITH A 400KG BASKET
AND  ROTATION

● 8.95M OUTREACH
WITH TELESCOPIC ARM
FULLY EXTENDED

● TRAVELS OVER THE SIDE AT
90 DEGREES AT A 120 CANT
WORKING AT ALL TIMES WITH
A FULL LOAD OF 400KG



PANTOGRAPH OPTION
WHICH MEASURES
AND RECORDS
HEIGHT AND STAGGER
MEASUREMENTS
WHILE ON
THE MOVE



NEW VISUAL
OVERLOAD
SYSTEM
(OPTION)

FOR MORE DETAILS ON OUR RANGE OF PRODUCTS PLEASE CALL
0044 20 7101 0727 OR 0044 1555 773 027 WWW.RAILPRODUCTS.UK.COM

ART 17TH

WITH PANTOGRAPH

Specification (standard track gauge)

Working height	16.25m
Platform floor height	14.25m
Max. outreach	8.95m
Up and over clearance	7.00m
Jib movement	+70°/-70°
Basket rotation	+90°/-90°
Turret rotation	360°
Capacity	400kg / 3 pers.
Basket size	2.30 x 0.93m
Lifting time	40s
Engine Kubota type V2403-M, 3 cylinder	46hp
Working speed on rail	1.0km/h
Maximum travel speed rail	12km/h
Gradeability on rough	40%
Max. cant in work mode	180mm
Max. cant in travel mode	200mm
Hydraulic tank capacity	120L
Diesel tank capacity	52L
Total weight	12,400kg

1. Width (overall width with basket) 2.30m
2. Length 6.93m
3. Height 2.37m
4. Length (Travel / transport) 4.94m
5. Height (Travel / transport) 2.70m
6. Inside turning radius 1.32m
7. Outside turning radius 3.68m
8. Outside turning radius with basket 6.39m
9. Ground clearance 42.5cm
10. Wheelbase 2.20m

- 4 wheel braking (On road and rail)
- 4 wheel drive (On road and rail)
- 4 wheel parking brake (On road and rail)
- Sole dealership worldwide
- Able to travel under live wire
- Able to on/off tracking in 150mm cant
- Full stability on 180mm cant in work mode and 200mm cant in travel mode
- Adjacent Line Open (ALO) work

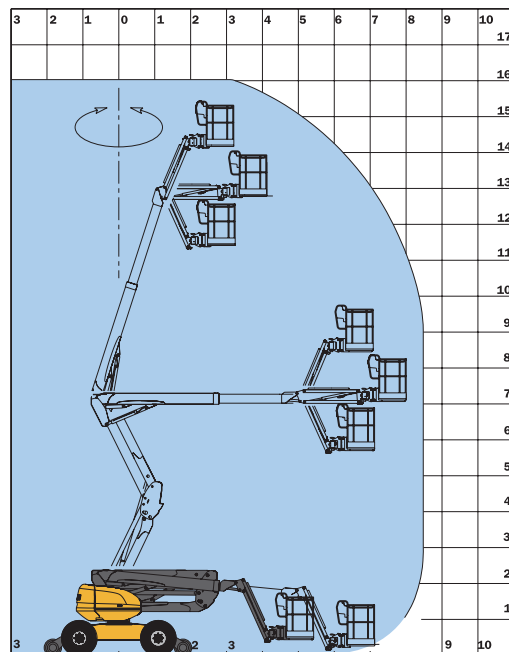
Standard equipment

- Large basket with 3 access points
- Fully proportional controls
- 4 simultaneous movements
- Foam filled tyres
- Differential lock
- Limited slip front axle
- Diagnostic calibrator
- Hourmeter
- Low fuel indicator
- Horn
- Flashing beacon
- Audible/visual tilt & overload alarms
- Slope override
- Lifting eyes
- Electric emergency recovery pump
- 1 tool tray
- Full vandal protection
- Lockable control panel covers
- Continuous rotation

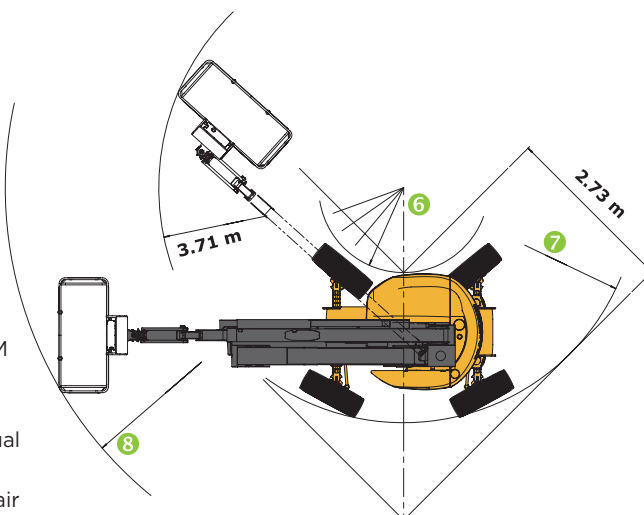
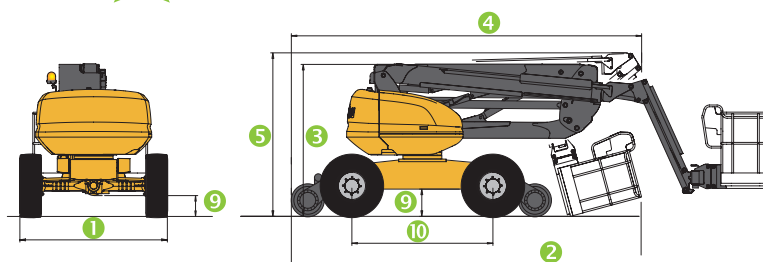
Options

- Multi Gauge ART 17THM (1000 - 1600mm)
- On board generator
- 230V outlet with residual current device
- Piped for compressed air
- Piped for water
- Biodegradable oil
- All movement alarm
- Beep on travel (Europe only)
- New visual overload system
- Extra working lights
- Catalytic purifier
- On board spill kit
- Panning unit
- Trailer
- Fire extinguisher

Full 400kg on all working radius's for standard and 1600mm gauges



360° ROTATION WITH 400KG BASKET



Rail Products

Mountcairn, 22 Cairnmount Road
Carluke, South Lanarkshire ML8 4EN
Phone: 0044 20 7101 0727
0044 1555 773 027
Mobile: 0044 7788 924 848
derek@railproducts.uk.com
www.railproducts.uk.com